

**TLOU ENERGY LIMITED****28 November 2016**

---

**Tlou Energy Limited****("Tlou" or "the Company")****CO-OPERATION AGREEMENT EXTENDED**

- Co-operation agreement extended with General Electric and IK Holdings

**Co-operation Agreement**

Tlou has extended a Co-operation Agreement with General Electric International Inc. ('GE') and IK Holdings Pty Ltd ('IK Holdings') for the delivery of a proposed gas to power solution for Botswana.

The Agreement provides the framework for co-operation between the parties in relation to sharing infrastructure and technical support for the delivery of the 50MW power project; gas supply to the existing 90MW Orapa power station owned by Botswana Power Corporation; and a proposed 300MW gas-fired power project to be developed by IK Holdings and GE.

The agreement was set to expire on 30 November 2016. This period has now been extended until 28 February 2017.

Gabaake Gabaake  
Executive Director  
**Tlou Energy Limited**  
**Website: [www.tlouenergy.com](http://www.tlouenergy.com)**

For further information regarding this announcement please contact:

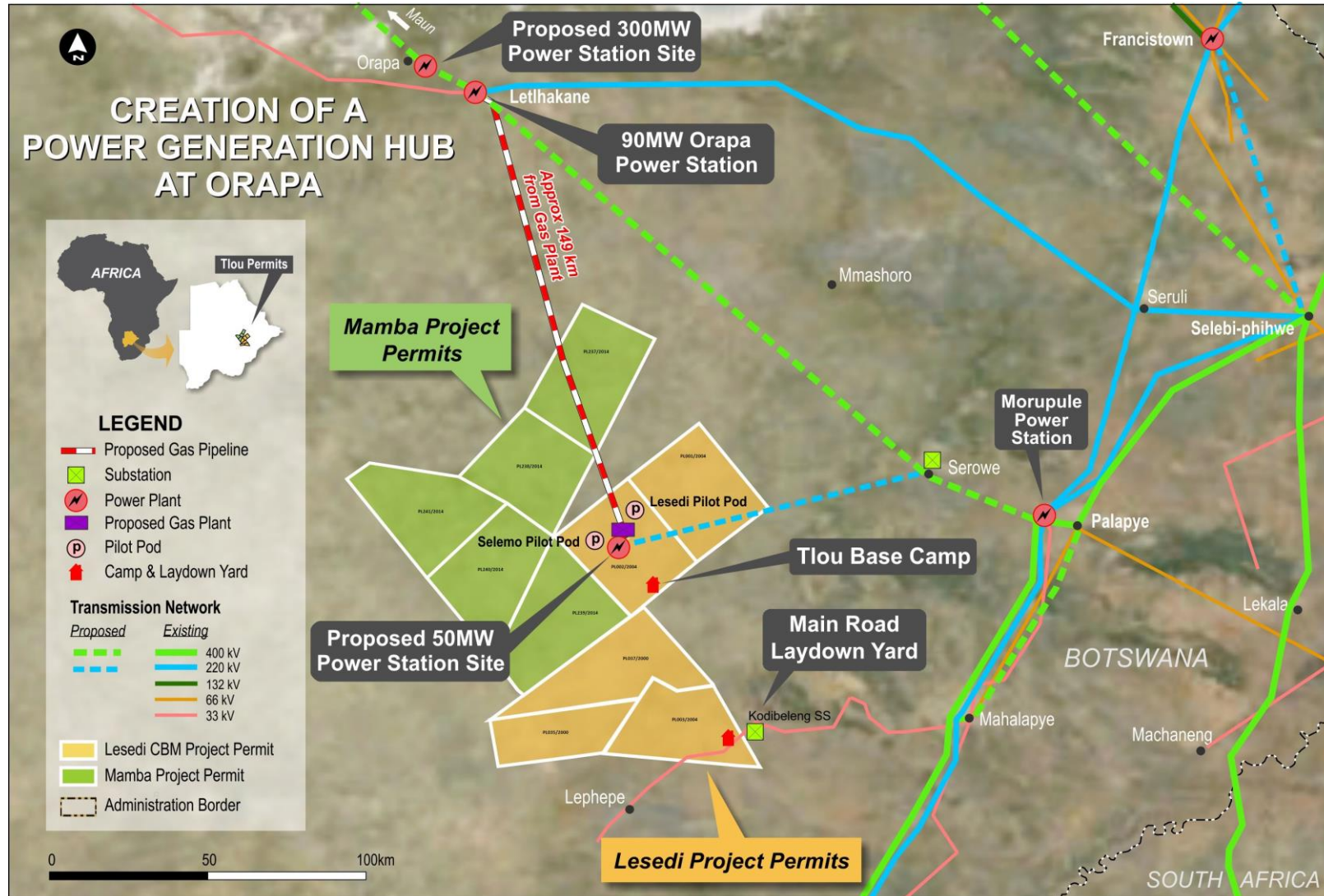
*Gabaake Gabaake*  
*Executive Director*  
Email: [info@tlouenergy.com](mailto:info@tlouenergy.com)

*Solomon Rowland*  
*Company Secretary*  
Email: [info@tlouenergy.com](mailto:info@tlouenergy.com)

TLOU ENERGY LIMITED



LESEDI CBM PROJECT PERMITS AND SURROUNDING POWER INFRASTRUCTURE



## TLOU ENERGY LIMITED



### Company Information

Tlou Energy is an AIM and ASX listed company focused on delivering power in Botswana through the development of coal bed methane ('CBM') projects. Botswana has a severe energy shortage and is currently relying on expensive imported power and diesel generation to deliver its requirements. However, as the 100% owners of the most advanced gas project in the country, the Lesedi CBM Project ('Lesedi'), Tlou Energy provides investors with access to a compelling immediate and longer term opportunity using domestic gas to produce power and displace the expensive diesel and import market.

The Company is led by an experienced Board, management and advisory team including individuals with successful track records in the Australian CBM industry.

Since establishment in 2009 the Company has significantly de-risked the project in consideration of its goal to become a significant gas to power producer. The Company has the most advanced CBM project in Botswana with gas flaring at its Selemo wells. It holds 10 prospecting licences covering an area of ~8,300Km<sup>2</sup> and the Lesedi project already benefits from significant, independently certified contingent gas resources of ~3.3 trillion cubic feet (TCF) (3C) as well as an initial independent gas reserve certification.

The first planned gas-to-power solution is expected to be delivered through a scalable project with the Botswana Government. Following successful implementation of this project the Company plans larger projects to provide further power to Botswana and the southern African region.